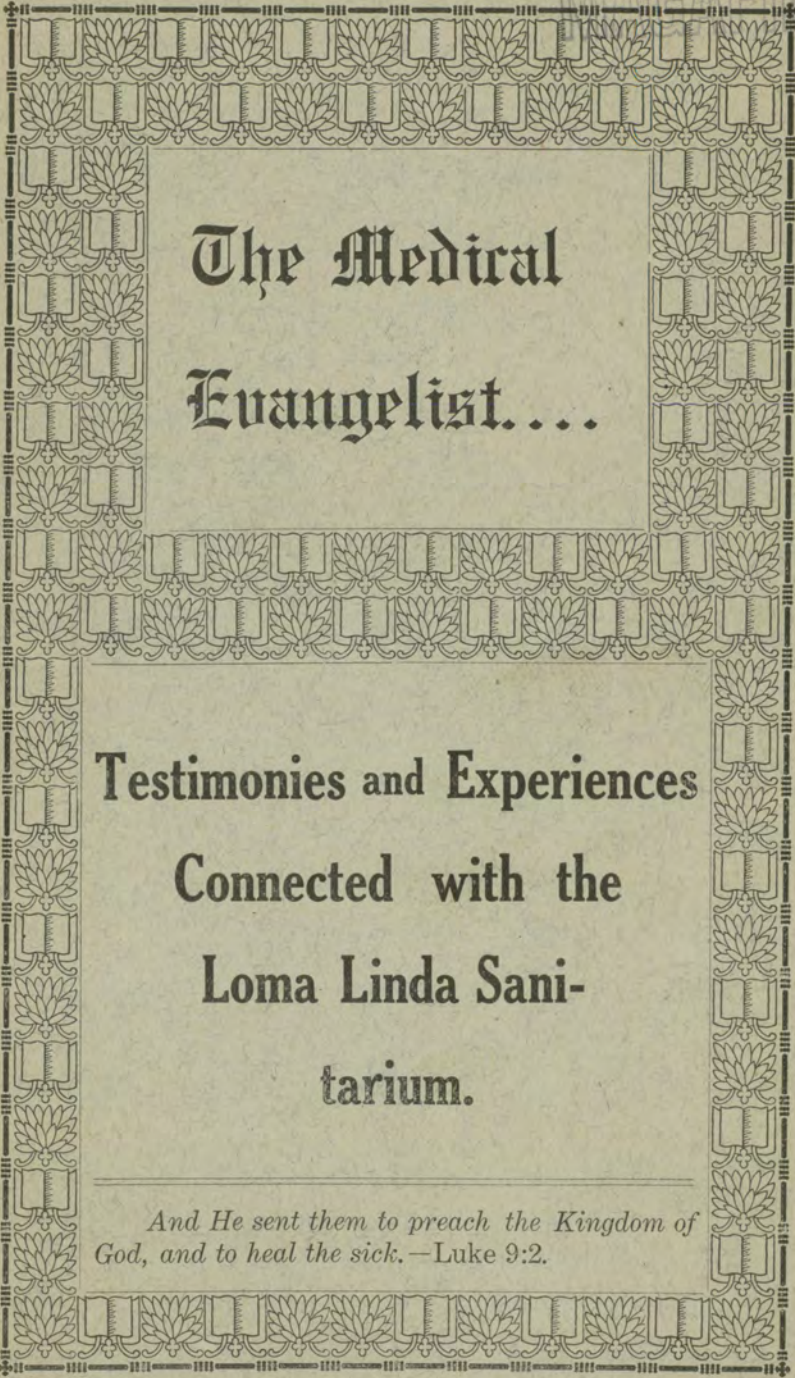


vol no. 2

MAGAZINE



The Medical Evangelist...

Testimonies and Experiences
Connected with the
Loma Linda Sani-
tarium.

*And He sent them to preach the Kingdom of
God, and to heal the sick. — Luke 9:2.*

FOUND

We have at last found a way to combine Medical with Evangelistic work. Many who understand the one or the other of these separately do not understand them both, or do not know how to combine them together as Christ and the Apostles used to do. But we have found a way of teaching the two subjects together as the Spirit of Prophecy has so long been saying we ought to do; and if you are interested in the subject just drop a line to the President of our School for further information.

Notice the Different Courses.

The College offers the four following courses of study:—

MEDICAL EVANGELISTIC. Three Years, designed to qualify workers as ministers, evangelists, and missionaries with all the ability of physicians, "to labor not in professional lines, but as evangelists."

NURSES. Three Years, Giving a broader training in technical and scientific lines than is usually given, together with such thorough instruction in Bible study and missionary work as to make the students real medical evangelist, rather than professional nurses.

ADVANCED COURSE for GOSPEL WORKERS. One Year. For young ministers, church school teachers, canvassers, Bible workers, and graduate nurses, who wish a broader training along scientific or Biblical lines in order to carry forward symmetrically all lines of gospel work.

HYGIENIC COOKING. One Year. A thorough practical course with solid technical and scientific studies will be given to a limited number of students who are in earnest about qualifying themselves to answer the constant appeals for hygienic cooks and bakers. Not more than ten can be admitted to this course.

For the details of these courses, or any further information as to expenses, etc., address the President,

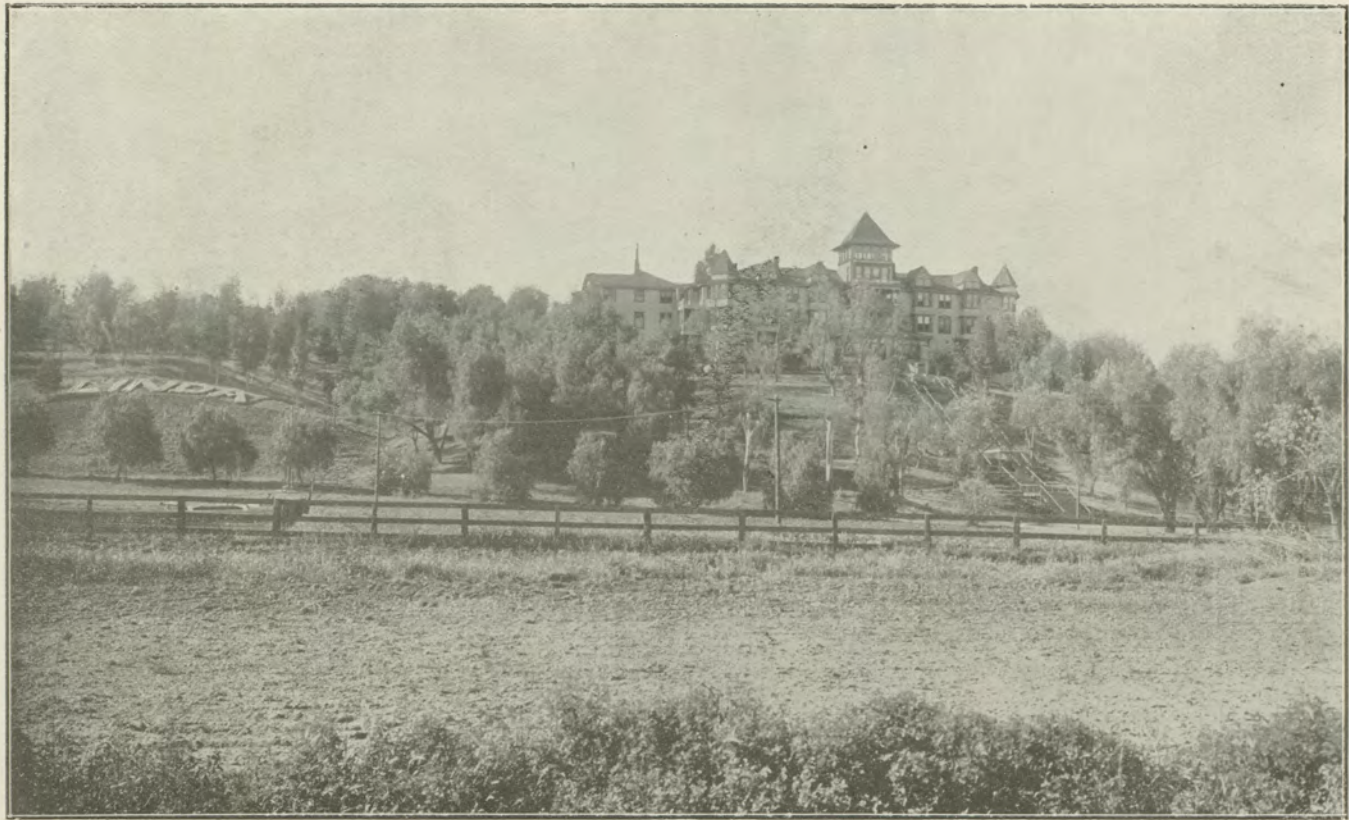
G. K. ABBOTT, M. D.



Sanitarium, Front View.



Nurses' Library.



View of Sanitarium from S. P. Ry.



On the Lawn, Under the Pepper Trees.

The Medical Evangelist

Published by the College of Evangelists

VOL. I

LOMA LINDA, CALIFORNIA, JULY--EXTRA, 1903

No. 2

TESTIMONIES AND EXPERIENCES CONNECTED WITH THE LOMA LINDA SANITARIUM.

The special providence of God that led to the securing of this beautiful property, and the oft repeated instruction from the Testimonies that Southern California is to become a special field for medical missionary work, has given this institution a world-wide reputation among our people. Believing that many would be interested in a somewhat detailed account of the development and progress of its work, we write these few lines, hoping they may strengthen faith in the gift the Lord has given this people to guide us in dark and trying times.

For many years Southern California has been growing in reputation as a health resort, until now the eyes of the world are turned toward its sunny climate as offering special advantages for the sick and feeble.

Several years ago, when Sister White returned from Australia, the Lord opened before her plans for the work in this field, stating that its reputation from a health standpoint would greatly increase, also calling the attention of our people to the importance of establishing without delay a number of medical institutions. We were told that there were properties for sale at a low price which could be used for sanitariums, and urging that some of these be secured and a beginning be made in several places. The following are extracts from Testimonies regarding this work:✠

"From the light given me when I was in Australia, and renewed since I came to America, I know that our work in Southern California must advance more rapidly. The people flocking to that place in search of health must hear the last message of mercy.

"For years the work in Southern California has needed help, and we now call upon our brethern and sisters who have

✠All quotations in this number not otherwise credited are taken verbatim from the writings of Mrs. E. G. White.

means to spare to put it into circulation, that we may secure the places so well suited for our work.

"God has not been pleased with the way in which this field has been neglected. From many places in Southern California the light is to shine forth to the multitudes. Present truth is to be as a city set on an hill, which can not be hid.

"In Southern California there are many properties for sale on which buildings suitable for sanitarium work are already erected. Some of these properties should be purchased, and medical missionary work carried forward on sensible, rational lines. Several small sanitariums are to be established in Southern California, for the benefit of the multitudes drawn there in the hope of finding health. Instruction has been given me that now is our opportunity to reach the invalids flocking to the health resorts of Southern California, and that a work may be done also in behalf of their attendants.

"For months I carried on my soul the burden of the medical missionary work in Southern California. Recently much light has been given me in regard to the manner in which God desires us to conduct sanitarium work. We are to encourage patients to spend much of their time out-of-doors. I have been instructed to tell our brethren to keep on the lookout for cheap, desirable properties in healthful places, suitable for sanitarium purposes.

"Instead of investing in one medical institution all the means obtainable, we ought to establish smaller sanitariums in many places. Soon the reputation of the health resorts in Southern California will stand even higher than it stands at present. Now is our time to enter that field for the purpose of carrying forward medical missionary work."

"ST. HELENA, Cal., October 13, 1902.

"During my stay in Southern California, I was enabled to visit places that in the past have been presented to me by the Lord as suitable for the establishment of sanitariums and schools. For years I have been given special light that we are not to establish large centers for our work in the cities. The turmoil and confusion that fills these cities, the conditions brought about by the labor unions and the strikes, would prove a great hindrance to our work. Men are seeking to bring those engaged in the different trades under certain unions. This is not God's plan, but the planning of a power that we should in no case acknowledge. God's Word is fulfilling; the wicked are binding themselves in bundles ready to be burned.

"I have been instructed that the work in Southern California should have advantages that is has not yet enjoyed. I have been shown that in Southern California there are properties for sale on which buildings are already erected that could be utilized for our work, and that such properties will be offered to us at

much less than their original cost. In these places, away from the din and confusion of the congested cities, we can establish sanitariums in which the sick can be cared for in the way in which God designs them to be. In our efforts to help the sick, we are to take them away from the cities, where they are continually annoyed by the noise of trains and street cars, and where there is little besides houses to see, to places where they can be surrounded by the scenes of nature, and where they can have the blessing of fresh air and sunshine.

"This subject was laid out before me in Australia. Light was given me that the cities would be filled with confusion, violence, and crime, and that these things would increase till the close of this earth's history. There is much to be said on this point. Instruction is to be given line upon line, precept upon precept, here a little and there a little. And our physicians and teachers should be quick to see the advantage of retired locations for our sanitariums and schools.

"Properties such as those to which I have referred are being offered to us, and some of them we should purchase when it is plain that they are what we need, and when provision can be made for their acquisition without a burdensome debt. Where there are orchards on these places so much the better; but on other properties, where the buildings are just what we need, trees can be set out.

"The fact that in many cases, the owners of these properties are anxious to dispose of them, and are therefore willing to sell at a low price, is greatly in our favor. We must study economy in the outlay of means. At this stage of our work, we are not to erect large buildings in any of the cities. And we are not to follow extravagant and unduly large plans in our work in any place. We are to remember the cities which have been neglected and which must now be worked. The people in these cities must have the light of truth. In our establishment of sanitariums, we are not to spend large sums of money in the erection of costly buildings; for there are many places to be worked. We are to be wise in securing advantages already provided that the Lord desires us to have. We are to be wise as serpents and as harmless as doves in our efforts to secure country properties at a low figure, and from these outpost centers we are to work the cities.

"The work in Southern California is to advance more rapidly than it has advanced in the past. The means lying in banks or hidden in the earth is now called for to strengthen the work in Southern California. Every year many thousands of tourists visit Southern California, and by various methods we should seek to reach them with the truth."

In the light of these Testimonies, a number of efforts was

made to rally the people for a forward move in medical lines, but without avail, as there were no funds on hand with which to make a beginning. Still the word came urging that sanitariums be established without delay. Finally a few, who were so interested to see the work go forward that they could wait no longer, secured a very desirable property at Paradise Valley, near San Diego. With but little encouragement except from its promoters, the institution was soon fitted up to receive patients, and has gone steadily forward with its work until now it is a well equipped sanitarium.

While this enterprise was developing in San Diego, an effort was being made to place the Los Angeles Vegetarian Cafe and treatment rooms in improved quarters, also to establish a Sanitarium near Los Angeles. In both these enterprises, the outlook seemed very dark and forbidding, and the only thing to encourage was the testimony that once more the Lord had signified that the work should be started near Los Angeles. Those therefore, who could not delay longer, undertook the preliminary work of securing the Glendale Sanitarium, and new quarters for the treatment rooms and Vegetarian Cafe in Los Angeles.

While at first things moved hard and slow, as we moved forward in confidence in the Testimonies that had pointed out the definite work to be done, difficulties soon vanished and in a few months the Glendale Sanitarium, its branch treatment rooms, and the Vegetarian Cafe in Los Angeles were all in good running order, thus proving that when the Lord bids us move forward in any line, it is not impossible to do so. Although the work had been delayed for a number of years, when the people had a mind to take hold and follow the Lord's instruction, the work was really accomplished in a very short time. The first year's balance sheet of these combined enterprises showed a gain of over six thousand dollars above running expenses, besides the six thousand dollars donated to start the work.

In the mean time the following had been received:

“SANITARIUM, Cal., August 8, 1904.

“Again and again during the past five years symbolic representations have been presented to me in visions of the night; showing what we ought to be doing in sanitarium work to help the sick to recover soundness of body and mind. On the night of October 10, 1901, I was unable to sleep after half past eleven at night. Many things regarding the sanitarium work were

presented to me in figures and symbols. I was shown sanitariums near Los Angeles in running order. At one place I saw sanitarium work being carried on in a beautiful building. On the grounds surrounding the building there were many fruit trees. This institution, which was away from the city, was filled with life and activity.

"On the grounds of this beautiful place that I saw in the visions of the night, there were many shade trees, the boughs of which hung down in such a way as to form leafy canopies somewhat in the shape of tents. Underneath these canopies patients were resting. The sick were delighted with their surroundings. While some worked, others were singing. There was no sign of dissatisfaction.

"I awoke and for some time could not sleep. Many vivid scenes had passed before me, and I could not forget the words I had spoken to the patients and helpers. Brethren and sisters, Christ has instructed me to say to you, The Holy Spirit will make your hearts tender and soft by His grace. The Lord will guide you and teach you his way."

In February, 1905, shortly after the opening of the Glendale Sanitarium, we were instructed by the Spirit of Prophecy to look out for a sanitarium property near Redlands.

ATTENTION CALLED TO THE REDLANDS-RIVERSIDE DISTRICT.

In a letter written to Professor E. S. Ballenger, February 26, 1905, are the following paragraphs:

"I hope Brother Ballenger, that when you see a suitable place in Redlands, which could be used as a sanitarium, offered for sale at a suitable price, you will let us know about it. We shall need a sanitarium in Redlands. Unless we start an enterprise of this kind others will. I understand that the property owners are afraid that consumptives will come in, and thus the reputation of the place be spoiled. But, of course, we should make it clear that we are not going to establish a consumptive's home.

"I merely mention this so that you and Brother Burden may keep it in view. We shall not take any steps to establish a sanitarium in Redlands until we can be assured that we are doing the right thing. Bro. Burden and you can visit the place from time to time, and see what openings there are. And in all that you do be as wise as serpents and as harmless as doves."

In a letter written five days later—March 1, 1905, to Bro. Ballenger, it was intimated that a sanitarium site was waiting for us near Redlands:

"You can not think how thankful I am that there are two sanitariums in running order in Southern California. I hope that great good will be accomplished by these institutions. I was glad to read what you wrote about some belonging to the higher classes being at the San Diego Sanitarium. This is a class that we need to reach. Time is short, and the Lord would have the truth proclaimed in the highways and the byways. Angels of God will go before those who lift up the standard and wisely proclaim the truth.

"In closing, I would ask you not to forget that sometime a sanitarium will be needed in Redlands. When you have opportunity, examine the field cautiously, and tell us what you find there. We must not allow others to get in ahead of us, and shut us off. Now is the time to make discreet inquiries."

On April 12, 1905, the following was received:

"I hear that plans are being laid for Elder Simpson to leave Southern California. I had hoped to see him extend his work from Los Angeles to Redlands and Riverside. Redlands and Riverside have been presented to me as places that should be worked. These two places should not be longer neglected. Please consider the advisability of establishing a sanitarium in the vicinity of these cities with treatment rooms in each place to act as feeders to the sanitarium."

"Our people in Southern California need to awake to the magnitude of the work to be done within their own borders. Let them awake to prayer and labor. Let them manifest more spiritual vitality. They need a new conversion that they may labor untiringly for souls. Wherever there is spiritual life there will be an imparting as well as a receiving of light and blessing. The nourishment from God's Word will be received, and earnest work will be done. The act of imparting keeps open the channel for receiving. This truth our Saviour ever sought to keep before the people.

"I have a message to bear to the church members in Southern California. Arouse, and avail yourselves of the opportunities open to you. While Christ pleads in your behalf, plead for yourselves that you may be purified from every unrighteous thought, every unholy action. Make an entire surrender to God, of body, soul, and spirit. Be determined to do all in your power to learn the true science of soul-saving. While the light of God's day of mercy still shines, gather up every divine ray.

"If rightly conducted, our sanitariums may exert a refining, ennobling influence, and lead many souls to Christ. The religious principles maintained in these institutions will demonstrate that there is relief for the soul, weary and sick with sin. Many are weak and sick because of disease of the soul. Let Christ be held up before them as the great Healer, who invites

them to come to Him and find rest. Tell them that the heart of Christ is drawn out in compassion and love for His blood-bought heritage. He will heal the troubled heart that looks to Him in faith."

"To the poor sin-sick soul repeat the Saviour's invitation, 'Come unto Me, all ye that labor and are heavy laden, and I will give you rest. Take My yoke upon you, and learn of Me; for I am meek and lowly in heart, and ye shall find rest unto your souls. For My yoke is easy, and My burden is light.' There is true joy in learning of Christ.

"Tell the suffering ones of a compassionate Saviour. He is the only Physician who can heal both body and soul. He has given His life for the world, that men should not perish, but have everlasting life. He looks with compassion upon those who regard their case as hopeless.

"While the soul is filled with fear and terror, the mind can not see the tender compassion of Christ. Our sanitariums are to be an agency for bringing peace and rest to the troubled mind. If you can inspire the despondent with hopeful, saving faith, contentment and cheerfulness will take the place of discouragement and unrest. Wonderful change will then be wrought in their physical condition. Christ will restore both both body and soul, and, realizing His compassion and love, they will rest in Him. He is the bright and morning star, shining amid the moral darkness of this sinful, corrupt world. He is the light of the world, and all who give their hearts to Him will find peace and rest and joy."

THE SEARCH FOR A SITE.

On receiving these repeated instructions, a committee was appointed to investigate the opening for a sanitarium. When it was intimated that the prospective sanitarium was near Redlands, we felt impressed that it must be Loma Linda; hence the lowest cash price was quietly secured before the committee visited the place. In the meantime, Sister White passed through Los Angeles, on her way to the General Conference of 1905, at Washington, D. C. While her train waited at the depot the Loma Linda proposition was laid before here. She asked that further particulars be carefully looked up and forwarded to her at Washington.

HESITATION AND DELAY.

When the committee returned from viewing the property, a council was called to consider what recommendations should be sent to Washington. While there was a general agreement that the place fully met the description outlined in the Testimonies,

and was a desirable place for sanitarium work, no favorable recommendation could be secured from the council. Most of the members felt that the difficulties financial and otherwise made it impossible for the Conference to think of undertaking such a proposition.

Two or three of the committee, however, felt impressed that the hand of the Lord was in it; hence a letter was written to Sister White, fully describing the property, with the request that she council with the brethren from Southern California who were present at the Conference, and advise us at once as to what action we should take. To our surprise, a telegram came, urging us to secure the property without delay. Soon afterward, we received a letter from Takoma Park, dated May 14, 1905, in part as follows:

"Dear Brother Burden:—

"Your letter has just been read. I had no sooner finished reading it than I said, I will counsel with no one; for I have no question at all about the matter. . . Secure the property by all means, so that it can be held, and then obtain all the money you can and make sufficient payments to hold the place. Do not delay; for it is just what is needed.

"I think that sufficient help can be secured to carry the matter through. I want you to be sure to lose no time in securing the right to purchase the property. We will do our utmost to help you raise the money. I know that Redlands and Riverside are to be worked; and I pray that the Lord may be gracious, and not allow any one else to get this property instead of us.

"Here is the word of the Lord. Open up every place possible. We are to labor in faith, taking hold of a power that is pledged to do large things for us. We are to reach out in faith in Los Angeles and in Redlands and Riverside.

"If we do not succeed in getting this place, we shall have to search for another; for a sanitarium should be started at once, but I believe the Lord means that we shall have this place and that money can be obtained to purchase it. Let not this opportunity slip; for just such a place has been presented before me that it would be greatly to our advantage to obtain. May the Lord impress this people with the work long neglected in Southern California. I sent a telegram yesterday afternoon with a decided affirmation to purchase the place."

On receipt of this letter, another council was called, and the majority of the members of the committee felt that they could take no responsibility in the matter. But those who felt that they could not afford to delay action in view of the

instruction that had come, began to cast about to see what could be done. First, we communicated with the brethren at Washington to secure their advice. Meanwile, an effort was put forth to see what means could be obtained.

In counseling with Brother Owen, we learned that a Bro. Larson had asked him if the Conference would like some money. As soon as Bro. Larson could be found, the telegram from Sister White, with the letter that had followed, were laid before him. Upon hearing these, he exclaimed: "Praise the Lord! I have been praying to the Lord, for months, to send me a buyer, that I might get out of Sodom, and devote my means to the advancement of his cause. A few days ago, a man came and purchased my place, and the money is lying in the bank. The devil has been tempting me to invest it again in land, but I am sure that the Lord wants it to help secure this property." Without any hesitation, he turned over to us twenty-four hundred dollars. This little experience, simple though it was, strengthened our faith that God was in the move, and ever afterwards held us steady as perplexities arose that were calculated to cause us doubt that the Lord was leading.

On June 2, 1905, the following message was sent us:

"Dear Brother Burden: I am much encouraged by the letters that I have received from you regarding Loma Linda. From your description of this place, I believe it meets the representation which I have seen of what we should seek for as sanitarium locations. Such a place was presented to me a few miles from an important city. The city had recently been built up.

"I have tried to place before our people the representations given me regarding sanitariums in the country, and I have urged upon them the necessity of establishing our sanitariums outside of the cities. I have had repeatedly presented to me the advantage of securing locations some miles out of the cities. Those who follow the counsel of God in providing places where the sick and suffering can receive proper treatment will be guided to the right places for the establishment of their work.

"Let our sanitariums be located where there is an abundance of land. I can see the advantages of such a place as Loma Linda. The Lord worked to help us to secure this property. The work of this institution is to be carried forward on pure, elevated lines. It can be conducted in such a way that truth will be presented as the rock upon which to build.

"In order that our institutions shall teach right lessons,

there must be connected with them men of such simplicity that they are willing to learn of the great Teacher.

"We need workers who will gain breadth of mind by studying the book God has opened before us of His created works. Angels co-operate with those who proclaim the truths represented by the things of nature. These things are not God, but they are specimens of God's handiwork.

"Our medical workers are to do all in their power to cure disease of the body and also disease of the mind. They are to watch and pray and work, bringing spiritual as well as physical advantages to those for whom they labor. The physician in one of our sanitariums who is a true servant of God has an intensely interesting work to do for every suffering human being with whom he is brought in contact. He is to lose no opportunity to point souls to Christ, the great healer of body and mind. Every physician should be a skillful worker in Christ's lines. There is to be no lessening of the interest in spiritual things, else the power to fix the mind upon the great Physician will be diverted. While the needs of the body are to be strictly attended to, while all possible efforts are to be made to break the power of disease, the physician is never to forget that there is a soul to be labored for.

"God would draw minds from the conviction of logic to a conviction deeper, higher, purer, and more glorious, a conviction unperverted by human logic. Human logic has often nearly quenched the light which God would have shine forth in clear rays to convince minds that the God of nature is worthy of all praise and all glory, because He is the Creator of all things."

About this time, after the brethren at Washington had counseled with the officers of the General Conference, the Pacific Union Conference, and others, they instructed us that the Southern California Conference could take no responsibility in the enterprise. With such advice confronting us, and the strong feeling on the part of many of the brethren at home that we ought not to obligate ourselves further in institutional work in Southern California, it seemed as if nothing further could be done toward securing Loma Linda. However, letters continued to come from Sister White, urging us to move forward, and stating that if we should move forward as it was our privilege to, the Lord would open the way before us, and means would come from unexpected sources. We therefore again telegraphed Sister White at Washington, informing her of the situation, with the result that a telegram was received, signed by her and by brethren in attendance at the General Conference,

counseling us to delay matters until her return, if possible; and that if this could not be done, we were to secure an option.

SECURING AN OPTION.

As the owners were anxious to dispose of the property, we could not induce them to delay; and the best terms we could secure on an option was a thousand dollars forfeit. Arrangements were made for a contract of sale, but, the Sabbath intervening while the details were being worked up, the signing of the contract was postponed until Monday. Sunday, another telegram was received from brethren in attendance at the Conference at Washington, to the effect that developments did not warrant the securing of Loma Linda. Needless to say, this added greatly to the perplexity of the situation; but, after much prayer and meditation, we saw no way but to be true to our agreement, pay down the thousand dollars, and await developments. The instruction received and the unmistakable leadings of the Lord had been too clear for us to forfeit our word for a thousand dollars. We then telegraphed Sister White what we had done, and invited her to return from Washington by way of Southern California to consider what should be done with Loma Linda. In the meantime, another letter was received from her, dated May 28, 1905. One paragraph of this letter is as follows:

“When you wrote me about the advisability of purchasing the property known as Loma Linda, I did not consult with any one, because I thought this would hinder us, and I believed that we could carry the matter forward without putting the burden on the Conference. We do not desire to bring perplexity upon the Conference regarding this matter. Be assured, my brother, that I never advise anything unless I have a decided impression that it should be carried out, and unless I am firmly resolved to assist. I am glad that the means are in sight to make the first payment on the place; for we ought to have it. By all means, secure the property if you can; for I believe it to be the very place the Lord desires us to have. As soon as we can be released from here, we shall return to California.”

TESTS OF FAITH.

When an option on the Loma Linda property had been secured, by the payment of one thousand dollars, there followed a conflict between faith and doubt, which raged far and wide, from the General Conference to the Pacific Union Conference, and from the Southern California State Conference to the

churches, and from individuals to individuals, with quite a general expression of opinion that the Southern California Conference should keep free from further obligations in institutional work.

Not long afterward, about twenty of the brethren and sisters met Sister White at Loma Linda, on her return from Washington. The general trend of the conversation of Sister White, and of her talk before the committee, clearly indicated that she was in favor of securing the property at once. But as the committee did not feel free to assume so great a responsibility alone, it was decided to present the matter to the Los Angeles church the next morning, at 10 o'clock. Accordingly, Sister White rehearsed before a large congregation in the Los Angeles Carr Street church, the light that had been given her concerning the medical work in Southern California, and stated that the Loma Linda property recalled the scenes that had passed before her in vision, of properties that we ought to secure for sanitarium work.

The church-members present voted that the Loma Linda property be secured, and opened as a sanitarium. Those bearing responsibility in the Conference, however, did not see their way clear to obligate the Conference by the vote of one church, hence it was arranged for another meeting at the San Diego church, and still another more general meeting in the Los Angeles church on June 20, 1905, at which delegates from nearly all the churches of the Conference should be present.

While these meetings were being arranged for, there came a severe test of faith to those who were bearing the burden of carrying Loma Linda, until it could be decided what should be done with it. On or before the 15th of June,—just after the San Diego meeting, at which meeting it was practically voted that the Conference should bear no responsibility in the matter, and five days before the general meeting at Los Angeles could convene,—four thousand dollars had to be raised, or else we should have to lose the property and forfeit the thousand dollars we had paid down. The Conference, of course, under the existing circumstances, would assume no responsibility; and its attitude had tended to weaken the confidence of individuals in assuming responsibility. However,

after prayer and counsel with a few brethren and sisters, the four thousand dollars was raised, and the property held until at the general meeting it could be decided what the Conference would do. About this time, Elder G. A. Irwin, Vice-President of the General Conference, was passing through Southern California. After visiting Loma Linda, he came on to Los Angeles in time to attend our general meeting.

COUNCIL-MEETING IN LOS ANGELES. FINAL DECISION TO
PURCHASE

At the appointed time, the Los Angeles church was crowded with the brethren and sisters who had assembled. Sister White talked very earnestly for more than an hour, setting forth the high and exalted character of the work that should be done in this field along medical missionary lines. In the course of her talk, she expressed herself very clearly in favor of securing the Loma Linda property, as it fully met the description given her years ago, of properties that should be purchased and utilized for sanitarium work.

Notwithstanding this clear presentation by Sister White of her convictions, it still seemed a question, in the minds of some, as to whether the Conference, as a Conference, should take any responsibility in the matter.

While those who felt thus were expressing themselves, cautioning the delegates against assuming such a responsibility without carefully considering the present financial situation of the Conference, Elder Irwin arose, and briefly rehearsed the experience of the Australian brethren in past years in connection with the Avondale School. He clearly outlined how, while Sister White was urging forward the brethren in Australia to purchase the Avondale estate as a suitable site for carrying on a training-school for Christian workers, the brethren in positions of responsibility could see only failure in it; but time had demonstrated the wisdom of the advice in the testimonies that had finally led to the securing of that property and its development. He stated that it was now one of the most successful training-schools in the whole denomination, not only in a financial way, but in sending forth missionaries into the field. While he fully appreciated the difficulties the brethren of the Southern California Conference had presented in connection with the proposed purchase of the Loma Linda property, yet,

in the light of the testimonies regarding this matter, he would counsel the brethren and sisters of the Southern California Conference to face the situation, and move forward in faith.

No sooner was Elder Irwin seated, than a sister in the congregation arose, and remarked that she could not see why we should talk discouragement; that it seemed clear, from the instruction we had received, that we should secure the place; and she added that she had ten thousand dollars invested in worldly enterprises, and that if the Lord would release this money, it should go into Loma Linda. She had been praying the Lord to make her a pioneer in some enterprise.

The boldness of this sister encouraged many, and it was soon voted by the delegates of the Conference churches, that we secure Loma Linda, and proceed at once to raise the necessary funds. Before the meeting closed, eleven hundred dollars was received in cash and pledges.

PROVIDENCES CONNECTED WITH MAKING THE QUARTERLY \$5,000 PAYMENTS

We went from that meeting, feeling that a real victory had been gained; but this meant another test of faith a little later. Within the next three weeks, or thereabouts, five thousand dollars more must be raised to meet the second payment. The agitation over the question as to whether or not it was advisable to add to the obligations of the Southern California Conference, had tended to make our brethren and sisters hesitate over investing funds in Loma Linda; and although there were several who had means, none seemed ready to advance money with which to meet the second payment.

In our perplexity, it was advised that we ask the privilege of soliciting funds in the Northern California Conference. Upon visiting the northern field, the committee objected to granting us the privilege.

It is needless to say that as the very day drew near on which the payment was to be made, and no money was in sight, some anxiety was felt. Our gratitude to God, however, rose all the higher because of former anxiety when, in the midst of the suspense, the 10 o'clock mail, on the very day the payment was to be made, brought the required sum—five thousand dollars. We then took new courage, as we felt assured that the Lord was going before us.

Before the next payment was due, the third five thousand was secured and paid in.

This led the people of whom we had purchased, to make us an offer of a hundred dollars discount, if we would secure another five thousand dollars at once, and make the fourth payment,—which was not due for three months,—as they were anxious to make a distribution among the stockholders, who were beginning to feel dissatisfied with the sale. The Lord wonderfully favored us, and the money was secured.

LOMA LINDA AS AN EDUCATIONAL CENTER.

From the first meeting at Loma Linda, Sister White suggested that Loma Linda was to become an educational center. She stated that some at Fernando might at first think that the establishment of a school here would interfere with the interests of the school already started there; but that there was room for both. This proposed school at Loma Linda, said she, must be moulded by the early spirit of the message. We must try to get such men as Elder S. N. Haskell to connect with it, in order that our students in training for service as medical missionary evangelists, may get a new view of the work. We are now, said she, farther from the pattern than when our medical work first started.

So the idea of a school at Loma Linda has been a part of the plan of work here from the very first. On June 26, 1905, Sister White wrote as follows:

“It is just daylight, and I am seated on my couch, beginning a letter to you. There are many matters to be considered; and we all need the guidance of the Holy Spirit.

“I shall be pleased to hear from you at any time. I sincerely hope the brethren in Southern California will unite in pressing forward the school work and the sanitarium work. I hope that Brother ——— will move understandingly in reference to the sanitariums already in operation, and also in regard to the new sanitarium. I pray that the Lord may provide suitable help to connect with this institution.

“Do not be discouraged if in any wise there is some cutting across your plans, and if you are somewhat hindered. I hope that we shall never again have to meet the hindrances that we have had to meet in the past because of the way in which some things have been conducted in some lines in Southern California. I have seen the ‘hold-back’ principles followed, and I have seen the displeasure of the Lord because of

this. If the same spirit is manifest, I shall not consent to keep silent as I have done."

APPROVAL OF THE LOMA LINDA ENTERPRISE
BY PACIFIC UNION CONFERENCE.

In July, Elder Irwin visited Mountain View, and at a meeting of the Pacific Union Conference, July 6, 1905, he gave them a report of his visit to Southern California, and a description of the new property at Loma Linda. He stated that after he had looked the property over, and heard Sister White tell what had been shown her concerning such a place, it was very clear to him that the Conference should take it, and he so recommended. In view of his experience in Australia, where he had seen such wonderful results come from the location of the training-school for that field in a place that looked almost barren; and in view of Sister White's earnest appeal that Loma Linda be secured, he believed that there is more in it than we are as yet able to see. He felt like stepping out by faith, and accepting the responsibility. Elder W. B. White said that although the Union Conference Committee had taken action at its last meeting, recommending the Southern California Conference not to take upon itself additional indebtedness, yet now that this has been done, and it has been done with good counsel, it seemed to him that we should do everything in our power to co-operate with our brethren in Southern California, and that we should express to them our determination to do so. The following recommendations were then passed:

"Whereas, Much light regarding the matter of how to care for the sick has been given to the Seventh-day Adventist people, and with the light, large responsibility to provide sanitariums in favorable and needy localities; and, —

"Whereas, We have been led through the Testimonies to the Church to expect that in various localities, and especially in Southern California, properties suitable for sanitarium work would be offered to our people for prices far below their cost and actual value; and we were instructed by the Testimonies to look for and be ready to improve these opportunities to secure such sanitarium properties as we need; and, —

"Whereas, In fulfilment of our expectation, the Glendale property, worth fifty thousand dollars, was purchased for one-fourth of that amount; and the Paradise Valley property, worth thirty thousand dollars, for less than one-fifth of that amount; and recently the Loma Linda property worth at least one

hundred and twenty thousand dollars, for one-third of that amount; and, —

“Whereas, The purchase of these three large sanitarium properties, with the expense of fitting up and furnishing the new Restaurant and Treatment-Rooms in Los Angeles, and the purchase of the Fernando School property, constitutes a very heavy financial burden for the brethren of Southern California; and, —

“Whereas, The Scriptures say, ‘Bear ye one another’s burdens,’ and in times past our people in Southern California have been able and willing to assist the general work and our institutions in other parts of the field; therefore, —

“Resolved, That we encourage our brethren and sisters in Southern California in the arduous tasks they have undertaken, by expressing our appreciation of their faith in following the counsels given in the Testimonies, and their courage in undertaking great things for the sick and suffering; and that we encourage our brethren and sisters throughout our field to assist them in their great undertakings, with gifts, and loans without interest, and loans at a low rate of interest, so that they may quickly free these institutions from all outside obligations, and place them in the most favorable position to do their blessed work; and that our brethren, in soliciting such funds and loans outside of the territory of Southern California, do so in harmony with arrangements they may make with the different Conference Committees.

“Whereas, At a former meeting of this Committee, we counseled our brethren of the Southern California Conference, that, in view of their large financial responsibilities, it was not wise for the Conference to purchase Loma Linda; and, —

“Whereas, We have recently learned more fully the fitness and value of the Loma Linda property for sanitarium purposes, and how clearly it was presented to Sister White that the place should be purchased, for if it were not, others would secure it whose presence and work would greatly interfere with our work; also that when Sister White visited Loma Linda, she said that it corresponded exactly to the representations made to her in vision, of one of the places that would be offered to us, and that it should be secured; and that at the Los Angeles meeting of June 20, 1905, she strongly advised our brethren to secure the place without delay; therefore, —

“Resolved, That while the Pacific Union Conference can not enter into any legal responsibility in this matter, yet we will do all in our power to assist the Southern California brethren in making this institution a success, and that we approve of the plan adopted at their recent meeting for holding the property and managing the enterprise.”

These resolutions were acknowledged by the Southern California Conference Committee, July 13, 1905, as follows:

“Resolved, That we hereby express our grateful appreciation of the action of the Pacific Union Conference Committee in their hearty approval of the steps which we have taken in securing the Loma Linda Sanitarium property, and for their promise to do everything in their power to assist us financially, as well as by counsel in carrying the heavy burdens which devolve upon us in our efforts to follow the instructions given by Sister White in securing sanitarium and school property in our Conference.

“We desire further to express our appreciation of the course which you have taken in opening the way for us to secure means to carry these enterprises, by commending us to the sister conferences in the Union, and to our brethren and sisters in the Pacific Union territory who have means to donate or loan, thus providing opportunity for us to carry forward the sanitarium work in this field, which the Lord has so plainly directed us to undertake.”

LIBERAL GIFTS TOWARD SANITARIUM ENTERPRISES.

At a meeting on the camp-ground at Boyle Heights, Los Angeles, August 17, 1905, a full account of the light given concerning the medical missionary work in Southern California was presented to the Conference, dwelling particularly upon that which related to the establishment of sanitariums in this field, and how God would open the way for us to secure buildings at reasonable rates, if we would move forward in faith. The light concerning the two already established and the instruction concerning Loma Linda, was carefully reviewed. As one after another expressed themselves, it was manifest that the time for a forward move had fully come. As opportunity was given for donations, pledges, cash loans, and the consecration of property to be sold and the proceeds used to help in these enterprises, in less than an hour the total amount aggregated some fifty thousand dollars. The people rejoiced as of old when they had willingly offered to the Lord His own.

TESTIMONIES REGARDING LOMA LINDA.

The continued interest of Sister White in this enterprise, is shown by the following quotations:

“I wish to present before our people the blessing that the Lord has placed within our reach by enabling us to obtain possession of the beautiful sanitarium property known as Loma Linda. . . . Until our recent visit, I had never before seen such a place as this with my natural eyes, but four years ago just

such a place was presented before me as one of those that would come into our possession if we moved wisely. It is a wonderful place in which to work for the sick, and in which to begin our work for Redlands and Riverside. We must make decided efforts to secure helpers who will do most faithful medical missionary work. . . . Oh, how I long to see the sick and suffering coming to this institution! It is one of the most perfect places for a sanitarium that I have ever seen, and I thank our heavenly Father for giving us such a place. It is provided with almost everything necessary for sanitarium work, and is the very place in which sanitarium work can be carried forward on right lines by faithful physicians and managers. . . . When I saw Loma Linda, I said, 'Thank the Lord. This is the very place we have been hoping to find.' . . . It is one of the best locations for sanitarium work that I have ever seen. At this place the sick can be given every natural advantage for regaining health and strength.

"Forty years ago the Lord began to give us instruction in regard to the establishment of sanitariums, as one of His chosen ways for proclaiming the third angel's message. . . . Our sanitariums are to be schools in which people of all classes shall be taught the way of salvation. In them the sick are to be taught to overcome the appetite for tea, coffee, flesh-meat, tobacco, and intoxicating liquor of all kinds. In every one of our medical institutions the sick and suffering are to be pointed to the Saviour as their only hope. . . .

"For the past twenty years the Lord has been giving the message that plants are to be made in many places. He will greatly bless us as we endeavor to carry out His will. Out of the city into the country, is the word that has been given, and this word is to be obeyed. Our sanitariums are to be established in the most healthful surroundings. . . . God declared that we should find buildings suitable for our work, and that these buildings would be offered to us at a very low price. Has not our recent experience in Southern California proved this true? I could not but weep for joy as I saw how plainly the providence of God had been revealed in our selection of places for sanitarium work in San Diego, Los Angeles, and the Redlands and Riverside district.

"Money is needed with which to establish the work in places outside of the cities, from which the cities can be worked. We must have means with which to meet the payments on Loma Linda. I ask our brethren who have means to awake to the responsibilities resting upon them, and to do what they can to help us. Those who have the Lord's money in trust should regard it as a privilege to give of their means to help to pay for a place so well adapted to sanitarium work."

Again, on August 24, 1905, in writing to a physician, she says:

"I write to invite you to connect with our sanitarium work in Southern California.

"We now have three sanitariums in the Southern part of the State. Loma Linda, the one most recently purchased, is the most desirable place I have ever seen for a sanitarium. We realize that the Lord has been very gracious to us in opening the way for us to secure this plant. Until I saw Loma Linda, I could not feel that I had seen the place that seemed in every respect to correspond with the representation that I had seen of what a sanitarium should be. I had been instructed to say to our brethren that we should have a sanitarium near Redlands and Riverside. This institution is about five miles from Redlands, and ten from Riverside. But I had no idea that we would be able to purchase Loma Linda, though we had heard that the owners were very anxious to sell the property. While I was at Takoma Park, attending the General Conference, I received a letter from Brother Burden, describing the property at Loma Linda, and informing me that the place was offered for sale for forty thousand dollars. The description given answered in every respect to that of places that I had been instructed would be offered far below their original cost.

"The letter from Brother Burden I received on Friday afternoon. I asked W. C. White to telegraph immediately to Brother Burden that we should by all means secure the property. Some of our brethren connected with the Conference advised otherwise, fearing that the Conference would be more deeply involved in debt. But I followed my telegram with a letter, saying distinctly that the place should be purchased without delay. I consider that the advantages of this location authorized me to speak positively regarding this matter. I said: There is sufficient money in the hands of God's people, and if we seek the Lord, He will make their hearts willing to help in this time of need.

"After writing to Brother Burden, the uncertainty so affected me, that for several nights I was unable to sleep. I lifted my heart to God in prayer. With great anxiety I waited till at last word came that a deposit of one thousand dollars had been made and the way was open for us to secure the place."

* November 1, 1905, she wrote the following:

"We were deeply interested in your letter in regard to the prospects of having patients as soon as you are ready for them. I am so thankful to our heavenly Father that for a long time He has kept before me that there were buildings that we could obtain at a greatly reduced price. This instruction kept me from trying to purchase land on which to erect buildings at a

large cost. The Lord has certainly prepared the way for us, and He wants us to work interestedly in securing sanitariums.

"I feel thankful for the school property at Fernando, and I do thank the Lord for the property at Paradise Valley. And now you can see that the Lord designs that these places should be worked. It may be that there will have to be another building secured at a distance from Los Angeles, for thus it has been presented to me. But we can not yet reach for more, unless the Lord should make it known that the time has come. If we consecrate our individual selves to the Lord, we shall have that wisdom which would enable us to move intelligently.

"I thank the Lord with heart and soul and voice that He has brought Loma Linda to our notice, and that we might obtain it. I thank the Lord that He has sent you to help me carry out in a determined effort that which He designed should be a great blessing to us. Redlands will be a center, and so also will Loma Linda. A school will be established as soon as possible, and the Lord will open the way.

"As regards the proposition made by Brother ____, I look at the matter as you do. We can not afford to start on the high-wage plan. This was the misfortune of the people in Battle Creek, and I have something to say on this point. We have before us a large field of missionary work. We are to be sure to heed the requirements of Christ, who made Himself a donation to our world. There is to be neatness and order, and everything possible is to be done to show thoroughness in every line. But when it comes to paying twenty-five dollars a week, and giving a large percentage on surgical work done, light was given me in Australia that this should never be, because our record is at stake. The matter was presented to me that many sanitariums would have to be established in Southern California, for there would be a great inflowing of people there. Many would seek that climate.

"We must stand in the counsel of God, every one of us prepared to follow the example of Jesus Christ. We can not consent to pay extravagant wages."

Again, in December 10, 1905, she writes:

"I am continually thankful to our heavenly Father that in His providence we have been favored to secure this beautiful location as a health resort. It answers perfectly to the representation that was given me. Praise the Lord for His good- and mercy expressed to us amidst the many difficulties we have to meet. The Lord is our helper, and constant guide. I say to you, my brother, Jesus will be to us a present helper in every time of need. In regard to the school, I would say, Make it all you possibly can in the education of nurses and physicians."

At this time, for the sake of the school that was to be

established, Sister White was doing all she could to get such persons as Doctors Holden and Morse, Brother and Sister Haskell, and Sister Peck, to connect with the work at Loma Linda. In her talks concerning the school, she stated that thousands must be qualified with all the ability of physicians, to labor, not in professional lines, but as medical missionary evangelists.

THE BAKERY ENTERPRISE.

Another enterprise Sister White has suggested, and has been anxious to see carried forward at Loma Linda, is a small missionary food manufactory, or bakery, for the benefit of the sanitarium and school and the surrounding towns in the valley, as is shown by the following quotations:

In a letter dated December 10, 1905, I read:

"In regard to the investment of means in a food factory, if you can obtain the money, it is the very thing needful, and I have had this in mind. I was afraid you would let Brother Hanson go and we would be left in the lurch at Loma Linda. I know he is a man of good sense, and he has a faculty of experimenting on health foods, which will be a blessing to the food factory and to the table-fare. I would say, improve your present opportunity and select a man to go in with him who can be educated in uniting with him to perfect the work. I would not delay this essential development; for it will be a great blessing to the sanitarium, and not only to it, but to other sanitariums."

On December 11, 1905, she wrote again:

"I have been conversing with you in the night season in regard to some matters that I will write you about. We were conversing with reference to Brother Hanson and his manufacturing health foods. We were conversing with regard to erecting a store, and one of authority who was in our midst, speaking to several present suggested the propriety of erecting such a building at a distance from the main building and all other buildings that are now standing there, so that there will be no danger to them from fire. He suggested that changes would have to be made after thorough study, and that the buildings should be placed where the wind would not carry the smoke or sparks to the main building.

"Before closing my letter, I will finish what I intended to say about the building of the food factory. This work requires much wisdom and genuine good sense. If you can bring it about, do so. Make the best possible use of 'Ministry of Healing' to aid you in your work. I believe that you can accomplish that which seems to be a necessity."

These communications were read to the Conference Com-

mittee, and it was voted to proceed with the work. Machinery was ordered, and the material for the building purchased. The carpenters had started to lay the foundation, when word came from Northern California, inviting us to delay matters for counsel with the Union Conference. A meeting was called at Loma Linda, at which it was decided that it would be in harmony with the Testimonies to proceed with a small bakery plant; but it was plain to be seen that nearly all present would like to see the enterprise abandoned. Shortly after this meeting, the following communication was received:

"I have an apology to make in not sending you sooner this letter regarding a bakery at Loma Linda. I must write you words of counsel.

"The Lord has instructed me that it would be a mistake for us to plan for the production of large quantities of health foods at Loma Linda, to be distributed through commercial channels. Everything connected with the institution at Loma Linda should, so far as possible, be unmingled with commercialism. In the visions of the night, these principles were presented to me in connection with the proposal for the establishment of a bakery at Loma Linda. I was shown a large building where many foods were made. There were also some small buildings near the bakery. A most unfavorable impression was being made.

"Then One appeared on the scene and said: 'All this has been caused to pass before you as an object-lesson that you might see the result of carrying out certain plans. Commercialism must not take the place of the vital work to be done.'

"And then, lo, the whole scene changed. The bakery was not where we had planned it, but at a distance from the sanitarium buildings, on the road toward the railroad. It was a humble building, and a small work was being carried on there. The commercial idea was lost sight of, and, in its stead, a strong spiritual influence pervaded the place. The patients were favorably impressed with what they saw. Nothing of a commercial nature, as a means of lessening the debt on the Sanitarium should be brought in to burden the mind."

Again, in a letter dated May 19, 1907, I read:

"It has been found necessary at Loma Linda to provide additional bathroom facilities. An elevator is greatly needed, and a small bakery should be added. Therefore we are in need of means to accomplish that which must be done."

Because of the questioning attitude of many, this necessary improvement was delayed at considerable inconvenience

and loss to the work, but through the self-sacrificing efforts of a few who believed the instruction sent, the bakery is now in running order.

INSTRUCTION CONCERNING THE COOPERATION OF OUR
TRAINING SCHOOLS AND SANITARIUMS.

“Sanitarium, Cal., Feb. 20, 1908.

“Dear Brethren:

“My rest has been broken during the past night. I find myself considering the best course to be pursued toward our sanitariums and schools.

“Clear light has been given me that our educational institutions should be connected with our sanitariums wherever this is possible. The work of the two institutions is to blend. I am thankful that we have a school at Loma Linda. The educational talent of competent physicians is a necessity to the schools where medical missionary evangelists are to be trained for service. The students in the school are to be taught to be strict health-reformers. The instruction given in regard to disease and its causes, and how to prevent disease, and the training given in the treatment of the sick, will prove an invaluable education, and one that the students in all our schools should have.

“This blending of our schools and sanitariums will prove an advantage in many ways. Through the instruction given by the sanitarium, students will learn how to avoid forming careless, intemperate habits in eating. Let the instruction be given in simple words. We have no need to use the many expressions used by worldly physicians which are so difficult to understand that they must be interpreted by the physician.”

ADVANTAGE OF THIS PLACE AS A CENTER FOR MISSIONARY
EFFORT

“Feb. 21, 1908.

“Southern California is a field that should depend more than it has upon its own resources. It should have more facilities, and should not be cramped as it has been in some respects.

“Southern California is a missionary field, a large part of which has received but little missionary effort. Henceforth it should receive more attention. The various lines of work that can be carried on should be diligently studied, and the advantages of such cities as Redlands and Riverside, and the need of putting forth decided effort for them, faithfully investigated.

“In Loma Linda we have an advantageous center for the carrying on of various missionary enterprises. We can see that it was in the providence of God that this sanitarium was placed in the possession of our people. We should appreciate Loma

Loma Linda as a place which the Lord foresaw we should need, and which He gave.

"The cities in the San Bernardino Valley were presented before me as places where the truth should go with power. The small printing press that Brother H. W. Kellogg has furnished should prove a blessing to the work in that part of the field, by printing publications that will be needed for the furtherance of the work in the Southern California cities. Our publications must now be greatly multiplied. Papers and leaflets containing the best discourses preached by our ministers, are to be published and scattered widely throughout the regions where meetings are being held."

We have endeavored to carry out this instruction by making our printing office the means of educating workers and advancing the message.

The following was addressed to those carrying responsibilities at Loma Linda. It outlines the character of the educational work that the Lord wished carried on at this place.

"March 24, 1908.

"Dear Brethren:—

"I feel a deep interest that careful study shall be given to the needs of our institutions at Loma Linda, and that the right moves may be made. In the carrying forward of the work at this place, men of talent and of decided spirituality are needed.

"We may, in the work of educating our nurses, reach a high standard in the knowledge of the true science of healing. That which is of most importance is that the students be taught how to truly represent the principles of health reform. Teach the students to pursue this line of study faithfully, combined with other essential lines of education. The grace of Jesus Christ will give wisdom to all who will follow the Lord's plan of true education.

"It is well that our training schools for Christian workers should be established near to our health institutions, that the students may be educated in the principles of healthful living. Institutions that send forth workers who are able to give a reason for their faith, and who have that faith that works by love and purifies the soul, are of great value.

"I have clear instruction that wherever it is possible, schools should be established near to our sanitariums, that each institution may be a help to the other.

"In the work of the school maintain simplicity. No argument is so powerful as is success founded upon simplicity. And you may attain success in the education of students as medical missionaries without a medical school that can qualify physicians to compete with the physicians of the world.

"Let the students be given a practical education. And

the less dependent you are upon worldly methods of education, the better it will be for the students. Special instruction should be given in the art of treating the sick without the use of poisonous drugs, and in harmony with the light that God has given. Students should come forth from the school without having sacrificed the principles of health reform.

"The education that meets the world's standard is to be less and less valued by those who are seeking for efficiency in carrying the medical missionary work in connection with the work of the third angel's message. They are to be educated from the standpoint of conscience; and as they conscientiously and faithfully follow right methods in their treatment of the sick, these methods will come to be recognized as preferable to the method of nursing to which many have become accustomed, which demands the use of poisonous drugs.

"There should be at our sanitariums intelligent men and women who can instruct in Christ's methods of ministry. Under the instruction of competent, consecrated teachers the youth may become partakers of the divine nature, and learn how to escape the corruptions that are in the world through lust. I have been shown that we should have many more women who can deal especially with the diseases of women, many more lady nurses who will treat the sick in a simple way and without the use of drugs."

The following, addressed to the brethren in Southern California, calls attention to other improvements that are needed.

"April 23, 1908.

"Dear Brethren:—

"There is a very precious work to be done in connection with the interests of the sanitarium and school at Loma Linda; and this will be done when we all work to that end. The Word of God is to be our lesson book. In the unity that is coming in among our people we can see that God is working in our midst.

"Ever bear in mind that heaven is interested in every question that agitates your mind in regard to your school and sanitarium. Both are to be strengthened. The Lord is our helper and our God; let us look to Him to open the way for the carrying out of our plans.

"We must have a church at Loma Linda, that those in the sanitarium and school may have a suitable place in which to meet for worship; but this should not be an expensive building. We shall build a neat, modest, but roomy chapel, that will show that we believe we are living in the closing days of this earth's history, in a time when many of the cities because of their sins, will be cast down and their lofty buildings destroyed.

"In our school at Loma Linda many can be educated to

work as missionaries in the cause of Health and Temperance. The best teachers are to be employed in this educational work, —not men who esteem highly their own capabilities, but men who will walk circumspectly, depending wholly upon the Lord.

“Small cottages will have to be built at little cost to accommodate the teachers and students; for these are to gain all the advantages possible from the lectures given at the sanitarium. This work should go forward as fast as means for it can be obtained.

“The Lord expects all, by acts of self-denial, to help in the upbuilding of his work. In the house of worship to be erected, and the additional school rooms that will be needed, let all be willing to do their best, willing to deny themselves the unnecessary expenditure for display, that they may have means to give to the cause of God. The work in promulgating the principles of Health Reform, which the Lord has outlined to us, must be accomplished.”

CONCLUSION.

In the light of the instruction that has been given, the providential openings that have led to the securing of this property, and the degree of prosperity that has attended the work so far as it has been developed, who can question the leadings of the Lord in this matter? We have doubtless made our mistakes; but one thing is certainly true,—the Lord chose the place for a definite work. It is ours to study the plan, co-operate with Him in faith; and we shall see that His goings forth are prepared as the morning; that His ways are ways of pleasantness and all His paths are peace; that those who believe in the Lord their God, and in His prophets, will be blessed with established prosperity.

J. A. BURDEN.



The Loma Linda Sanitarium



A quiet retreat, away from noise and rush and dirt
of the busy city. **Do you feel like saying;**

I want to let go,
To drop the whole thing,
The worries, the frets,
The sorrows, the sins,
Just to let myself down
On the bed or the ground—
Anywhere so it's down—
And let myself go.

I want to forget,
And I don't want to say
What I want to forget.
And I don't want to think,
Just to let down my nerves,
Just to smooth out my brain,
Just to sleep. And that's all.

Then spend a few weeks under the pepper trees at Loma
Linda. The Comforts of a Country Home.